

02.15 p02.8

## CERTIFICATE OF ANALYSIS

## 1. Identification

Catalogue  
Number:

S677303

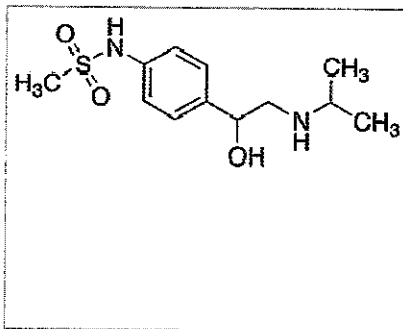
CAS Number: 3930-20-9

Product:

Sotalol

Synonym:

Structure:



Molecular Formula:

C<sub>12</sub>H<sub>20</sub>N<sub>2</sub>O<sub>3</sub>S

Molecular weight:

272.36

Source of Product:

N/A

Solubility:

Chloroform (Slightly, Heated), Methanol (Slightly, Sonicated)

Lot Number:

1-AFB-110-1

Purity:

98%

Shipping  
Condition:

This Product Is Stable To Be Shipped At Room Temperature

Storage  
Condition:

Hygroscopic, -20°C Freezer, Under inert atmosphere

## 2. Warning

Warning 1: Hygroscopic

Warning 2:

Warning 3:

## 3. Analytical Information

## Tests:

Appearance

## Specifications:

Pale Yellow to Light Yellow Solid

## Results:

Pale Yellow to Light Yellow Solid

NMR

Conforms to Structure

Conforms

Elemental Analysis

Conforms

%C: 52.81, %H: 7.24, %N: 10.10

MS

Conforms to Structure

Conforms

Specific Rotation

Report Result

+0.4° (c = 0.2, Methanol)

## Additional Information:

TLC Conditions: SiO<sub>2</sub>; Dichloromethane : Methanol : Ammonium Hydroxide = 8 : 2 : 0.3; Visualized with UV and AMCS; Single Spot, R<sub>f</sub> = 0.45. Elemental Analysis: (Theoretical) %C: 52.92, %H: 7.40, %N: 10.29

Purity is based on the analytical results of the tests performed. NMR and TLC may have an accuracy +-2%. Isotopic purity is based on mass distribution observed.

## 4. Signatures

Reviewed By

Reviewed By

C of A Approved By

Test Date

Retest Date

Nicole Yip

Toni Rantanen

My Nguyen

HBN

1/13/2020

01/11/2024